



# TAMWOOD

CAREERS, CAMPS & LANGUAGE CENTRES

## EXPAND YOUR WORLD

### Available Promotions for Japan

## 2025

*Applications received from July 1 to September 30,  
2025. All fees are in Canadian Dollars (CAD).*





# TAMWOOD

LANGUAGE CENTRES

# PRICESHEET 2025

## Intensive English - 30 lessons per week (Vancouver & Toronto)

Program Length      Brochure 2025      **FLAT RATE Promotion!**

1 - 15 Weeks	<del>\$355</del> per week	\$250 per week
16 - 21 Weeks	<del>\$355</del> per week	\$200 per week
22 - 32 Weeks	<del>\$355</del> per week	\$200 per week
33 - 43 Weeks	<del>\$355</del> per week	\$200 per week
44+ Weeks	<del>\$355</del> per week	\$200 per week

	Monday	Tuesday	Wednesday	Thursday	Friday
8:30 am to 1:00 pm	Principal Course	Principal Course	Principal Course	Principal Course	Principal Course
Each lesson is 40 minutes.					



Other Fees	Price
<b>Registration Fee</b> (non-refundable)	<b>\$200</b>
<b>Student Services Fee*</b> (per week)	<b>\$25 / week</b>

Optional Fees	Price
<b>Airport Transfer 1-Way)</b>	<b>\$120</b>
<b>Custodian letter for juniors</b>	<b>\$150</b>
<b>Courier Fee</b>	<b>\$105</b>
<b>Medical Insurance</b> fee + Daily Rate \$2	Total
1 Month	<b>\$140 \$60 \$200</b>
2 Months	<b>\$140 \$120 \$260</b>
3 Months	<b>\$140 \$180 \$320</b>
4 Months	<b>\$140 \$240 \$380</b>
5 Months	<b>\$140 \$300 \$440</b>
6 Months	<b>\$140 \$360 \$500</b>

Accommodation Options	high Season	Winter Price
<b>Accommodation Placement Fee</b>	<b>\$225</b>	<b>\$225</b>
<b>Special Dietary Request</b>	<b>\$50 / week</b>	<b>\$50 / week</b>

### Vancouver & Toronto

	May - Sept *	Oct - Apr *
<b>Homestay Single Full Board</b>	<b>\$390 / week</b>	<b>\$350 / week</b>
<b>Homestay Single Half Board</b>	<b>\$350 / week</b>	<b>\$310 / week</b>
<b>Roomstay Single</b> (no meals)	<b>\$300 / week</b>	<b>\$275 / week</b>
<b>Twin Discount</b> (2 people, same date)	<b>-\$25 / week</b>	<b>-\$25 / week</b>

Application fees are non-refundable. Full tuition must be paid 4 weeks prior to start date. Check-in and check-out is always Saturday to Saturday. 10 am check-out. Accommodation weekly fee based on 7 nights. All fees are in Canadian dollars.

Course start every Monday, except when Monday is a public holiday. For 2025 holidays please visit our website. No make-up classes.

\* High season 2025: May 31 to Aug 30, Low season 2025: Aug 30 to May 30, 2026.



# TAMWOOD CAREERS

# PRICESHEET 2025

Program Name	Program Length & Format	English Requirements BC	Program Fees	Discount Fees
<b>International Business &amp; Management</b>	<b>1 Year Diploma with Co-op</b>	IELTS 5.5	\$10,200	<b>\$8,200</b>
	<b>7 Month Certificate</b>	IELTS 5.5	\$10,000	<b>\$8,000</b>
<b>Digital Marketing</b>	<b>1 Year Diploma with Co-op</b>	IELTS 5.5	\$10,200	<b>\$8,200</b>
	<b>7 Month Certificate</b>	IELTS 5.5	\$10,000	<b>\$8,000</b>
<b>Web Developer</b>	<b>1 Year Diploma with Co-op</b>	IELTS 5.5	\$12,400	<b>\$9,900</b>
	<b>7 Month Certificate</b>	IELTS 5.5	\$12,300	<b>\$9,800</b>
<b>Hospitality &amp; Tourism</b>	<b>1 Year Diploma with Co-op</b>	IELTS 5.5	\$10,500	<b>\$8,400</b>
	<b>7 Month Certificate</b>	IELTS 5.5	\$10,300	<b>\$8,200</b>

Other Fees	Price
<b>Registration Fee</b> (non-refundable)	\$200
<b>Materials</b> (Business, DM & Hospitality)	\$650
<b>Materials</b> (Technology & Global Startup)	\$900

Optional Fees	Price
<b>Airport Transfer 1-Way</b>	\$120
<b>Medical Insurance</b> fee + Daily Rate \$2	Total
1 Month	\$140 \$60 \$200
2 Months	\$140 \$120 \$260
3 Months	\$140 \$180 \$320
4 Months	\$140 \$240 \$380
5 Months	\$140 \$300 \$440
6 Months	\$140 \$360 \$500

Accommodation Options	High Season	Low Season
<b>Accommodation Placement Fee</b>	\$225	\$225
<b>Special Dietary Request</b>	\$50 / week	\$50 / week

### Vancouver Homestay

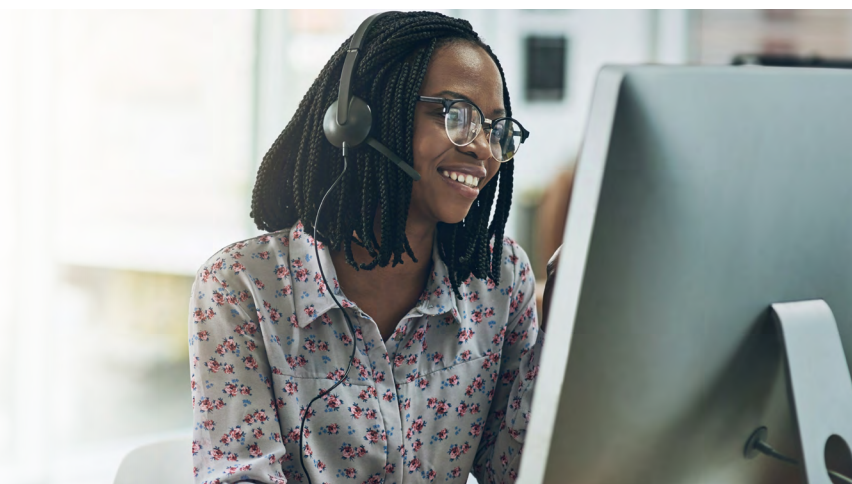
	Jun - Aug *	Sept - May *
<b>Homestay Single Full Board</b>	\$390 / week	\$350 / week
<b>Homestay Single Half Board</b>	\$350 / week	\$310 / week
<b>Roomstay Single</b> (no meals)	\$300 / week	\$275 / week
<b>Twin Discount</b> (2 people, same date)	-\$25 / week	-\$25 / week

Application fees are non-refundable. Full tuition must be paid 4 weeks prior to start date. Check-in and check-out is always Saturday to Saturday. 10 am check-out. Accommodation weekly fee based on 7 nights. All fees are in Canadian dollars.

\* High season 2025: May 31 to Aug 30, Low season 2025: Aug 30 to May 30, 2026.

For Intake dates please check our website: [Admissions & Fees Information | Tamwood International College](#)

**DO MORE.  
LEARN MORE.  
BE MORE. 🍁**





# TAMWOOD CAREERS

## MICRO-CREDENTIALS

# Advance your career!

► Enroll in one of our new 4-week programs in business management, digital marketing, or web design and learn new skills and earn exciting modern credentials to bolster your resume and stay up to date on the industry!



Program	Length	English Requirement	Tuition	Textbook Fee	Class Timetable
<b>Cross Cultural Communication</b>	4 Weeks	Tamwood Lvl 14 (IELTS 5.5)	<b>\$1,500</b>	\$60	8:45am - 2:15pm M-TH
<b>International Business</b>	4 Weeks	Tamwood Lvl 14 (IELTS 5.5)	<b>\$1,500</b>	\$60	8:45am - 2:15pm M-TH
<b>Introduction to Digital Marketing</b>	4 Weeks	Tamwood Lvl 14 (IELTS 5.5)	<b>\$1,500</b>	\$60	4:00pm - 9:00pm M-TH
<b>Social Media &amp; Community Management</b>	4 Weeks	Tamwood Lvl 14 (IELTS 5.5)	<b>\$1,500</b>	\$60	4:00pm - 9:00pm M-TH
<b>Strategic Web Design</b>	4 Weeks	Tamwood Lvl 14 (IELTS 5.5)	<b>\$1,500</b>	\$60	4:00pm - 9:00pm M-TH

Programs can only be taken individually.

2025 Start Dates		Classes are conducted 4 days a week. Final intake in Toronto will be Sept. 29, 2025.		
<b>Cross Cultural Communication</b>	<b>International Business</b>	<b>Introduction to Digital Marketing</b>	<b>Social Media &amp; Community Management</b>	<b>Strategic Web Design</b>
September 29th, 2025	September 29th, 2025	September 29th, 2025	September 29th, 2025	November 24th, 2025

**Sign up and build a new future today!** Visit [www.tamwood.com](http://www.tamwood.com) or e-mail us at [home@tamwood.com](mailto:home@tamwood.com)





# TAMWOOD CAMPS

VANCOUVER

TORONTO

LOS ANGELES

SAN FRANCISCO

NEW YORK

# YOUR DREAM CAMP EXPERIENCE

English Training • Adventure • Leadership

Please  
contact your  
ILAC sales  
representative for  
the latest  
pricing!



[www.tamwood.com/camps](http://www.tamwood.com/camps)

## PRICE INCLUDES

### For All Camps

- 20 lessons of English per week (only for Teen Global Learner Camp and English Activity for Juniors) (1 lesson = 45 minutes)
- Airport Transfer to and from the closest international airport on camp start and end date (except for self-arranged campers). Please check brochure for the name of the airport that this service is provided at
- Camp t-shirt
- Free Wi-Fi while on campus

### Residence Camps also include:

- 24 hour support by Tamwood staff
- Medical insurance while at camp
- Dorm style accommodations
- Daily activities offered 7 days a week (morning, afternoon and evening)
- Two full day excursions per week
- 3 meals a day except on arrival & departure days
- Free weekly laundry service

### Self-Arranged Camps also includes:

- Daily activities offered 6 days a week
- Two full day excursions

WEEK	1	2	3	4	5	6	7
Start Date	6-29	7-6	7-13	7-20	7-27	8-3	8-10
Vancouver - UBC	ð	ð	ð				
Vancouver - SFU	λ	β λ	β λ	β λ	β λ	β λ	β
Toronto - UTM							
Los Angeles, UCLA US\$	λ	β λ	β λ	β λ	β λ	β λ	β
New York, Fordham US\$							
San Francisco, USF US\$							

β LIT Program

ð Future of Work  
Program start  
date (2 weeks)

λ Film School  
start date  
(2 weeks)

## PRICE DOES NOT INCLUDE

### For All Camps

- Airplane ticket and personal spending money
- Unaccompanied minor fee charged by airlines
- Optional activities available on Sundays
- Safety deposit of 150 CAD or 150 USD (deposit will be returned at the end of camp if there are no damages caused by the camper to the facilities)
- Notarized custodianship letter from Tamwood required for visa applications for citizens of certain countries

### For Self Arranged Camp

- Daily transportation between accommodation and camp facilities
- Evening activities except Tamwood disco
- For campers in self-arranged accommodation, price does not include breakfast or dinner and transportation from/to the airport & medical insurance

## REFUND POLICY (FOR NON-GROUP BOOKINGS)

### Refund of Program Fee

- If the student's application for an entry visa to Canada is denied by ImmigrationCanada, Tamwood will refund the program fee less a \$250 CDN/\$250 USD administration fee. (The student must provide letter of rejection for visa from Canadian Embassy to receive the refund).
- If the student withdraws 20 weeks or more before the program start date, Tamwood will refund the program fee less \$250 CDN/\$250 USD as a cancellation fee.
- If the student withdraws before June 1 in the program year, but less than 20 weeks before the program start date, Tamwood will refund the program fee less the received deposit as a cancellation fee.
- If the student withdraws after June 1 of the program year, or if the student withdraws or is dismissed from the program after start date, no refund will be given.

### Payment of Refunds Owing to the students

- Refunds owing to a student shall be paid to the student's booking agency, within thirty (30) days of Tamwood receiving written notification of withdrawal. All bank fees associated with payment of a refund are the responsibility of the student.

### Written Notice Required

- To be considered for a refund, the student must submit a written and signed notice to Tamwood International Camps of withdrawal from the program. Verbal notices will not be considered.

### Program Changes

- Once an application has been accepted by Tamwood, any changes requested by the student to the start date, end date, program type or accommodation options will be made only if the change is requested before the student's arrival in Canada and before any services have been rendered by Tamwood to the student. Changes will be made only if space is available, and all changes made will be subject to the Tamwood published Program Change Fee.

*\*All changes must comply with Canadian Immigration Laws.*